

Multi Client Wellhead Removal Campaign 2010

Summary

NCA was contracted by OIS (a trading division of Interact) to cut and recover six subsea wellheads in the UK sector of the North Sea. An additional contract provision required NCA to use its tooling to enable the recovery of a horizontal Christmas tree. Using NCA's Subsea Wellhead Picker, the scope of work was successfully completed during August 2010, utilising Island Offshore Management's Island Valiant.

The cutting and recovery operation used NCA's innovative and patented Subsea Wellhead Picker and Internal Multistring Cutting Tool (IMCT). The IMCT is based on the environmentally friendly Abrasive Water Jet Cutting method and is a proven technology with more than 250 conductors cut.

Project Facts

Location: North Sea
 Timing: August 2010
 NCA Client: OIS
 End Clients: Nexen, Premier, Dana, Nippon

Well	Casing Configuration	Depth
15/22-4	30in x 20in x 13-3/8in x 9-5/8in	144m
15/22-5	30in x 20in x 13-3/8in x 9-5/8in	144m
15/22-12z	30in x 20in x 10-3/4in	144m
9/28b-19a	30in x 20in x 9-5/8in	122m
16/21b-35	30in x 21in	148m
15/24a	30in x 20in x 13-3/8in x 9-7/8in	151.5m

Scope of Work

NCA was contracted to project manage, plan and execute the subsea cutting operation. The planning phase was done in close cooperation with OIS and included wellhead assessment, interface coordination, preparation of deck layouts and work programs, participation in risk assessments with all involved parties.

Achievements

- ✓ No LTIs or LTAs
- ✓ No harm to the Environment.
- ✓ Christmas tree was successfully recovered without issue.
- ✓ Cutting operations were completed on schedule.

NCA Contact Person

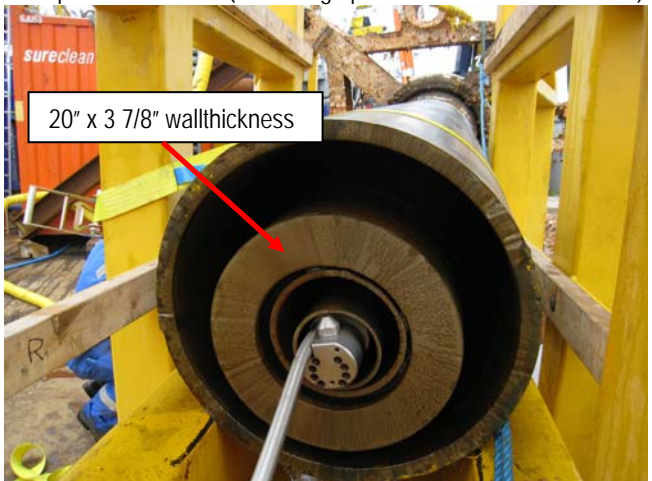
Norse Cutting and Abandonment
 Øystein Kanestrøm, Senior VP Contracting
 Email: oka@nca-group.com



ROV picture of Nexen 15/22-4 and 15/22-5 Wellheads



Cut profile of 15/22-5 (cut through pin and box of 20in connector)



Cut profile of 15/22-12z