

Sub Sea Guillotine Saw Cutting

NCA's Guillotine Saws are world leading in efficient pipe cutting and have an extensive track record for use both in air and sub sea. The Sub Sea Guillotine Saws (SGSs) are operated by a Work ROV and require no additional down-lines or other support from surface, providing maximum flexibility and operational efficiency.

The Sub Sea Guillotine Saw comes in three different sizes covering 5" to 32" OD pipe. Each tool is neutral buoyant sub sea and consists of a hydraulic clamp, reciprocating D-bow with dual saw blades and a patented hydraulic feeding system that allows the saw to work efficiently on any type of steel. All functions are controlled by a work class work ROV.

The smallest SGS is small enough to be deployed already attached to the ROV. The two larger versions are deployed separately in a tool basket and come with a unique, sub sea docking system that enables the ROV to mechanically and hydraulically connect to and control the SGS, sub sea.

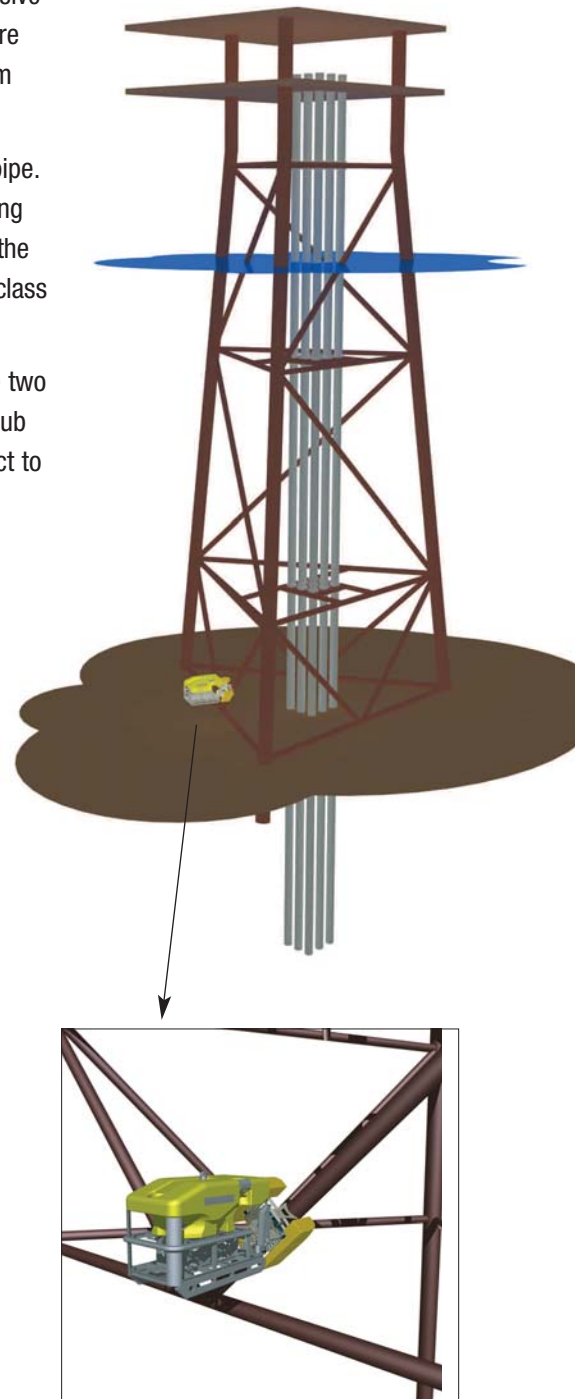
In addition NCA also has diver installed Guillotine Saws.

Applications

- Diverless, sub sea cutting of pipelines, bracings and beams

Features and Benefits

- Can do multiple cuts in one deployment
- 100% controlled from the ROV – no need for additional down lines and topside support equipment
- Superior cutting speed – typically one-inch per “diameter” minute
- Multidimensional clamp – no need to recover for different size of members of the cut
- Patented, dual blade system makes for quicker and more reliable cutting
- All tools can also be installed by divers
- Produces clean and even cuts
- Cut is complete and verified when front blade travels through the pipe



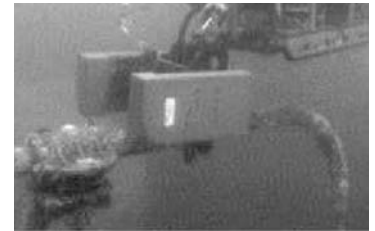
Specifications

Work ROV requirements	100-150 hp with 2 manipulators or similar
Hydraulic requirements	<ul style="list-style-type: none"> • Clamp – 2.7 gal/min (on/off), 2,900 psi, differential vol 0.13 gal • Feed – 2.7 gal/min (proportional control), 2,175 psi, differential vol. 0.08 gal • Sawing/Boring - 15-19 gal/min (proportional control) • All valves spools to have open return to tank in neutral position • Docking probe requires two small volume 2,900 psi functions for setting and tilting
Depth rating	Typically down to 600 m / 2000 ft

Available Versions

Equipment	Dimension	Dimensions (LBH)	SWL weight
SGS 510	5-10" pipe	1.0 x 1.1 x 1.7 m 40 x 44 x 30 in	300 kg 661 lbs
SGS 1020	10-20" pipe	1.8 x 1.9 x 1.7 m 72 x 74 x 66 in	621 kg 1,366 lbs
SGS 2432	20-32" pipe	2.23 x 2.33 x 1.65 m 106 x 99 x 71 in	1,681 kg 3,968 lbs

The NCA Guillotine Saws are patented.



Norse Cutting & Abandonment AS

Hamrasletta 11 ~ 4056 Tananger, Norway
Tel: +47 51 64 91 00 ~ Fax: +47 51 64 91 20

Norse Cutting & Abandonment Inc.

5535 Brystone Drive ~ Houston, TX 77041 USA
Tel: +1 832 327 3640 ~ Fax: +1 832 327 3645

Norse Cutting & Abandonment Ltd.

Units 1-6 Howemoss Drive ~ Kirckhill Drive
Dyce-Aberdeen AB21 OGL, Scotland
Tel: +44 (0) 1224 722555 ~ Fax: +44 (0) 1224 773123